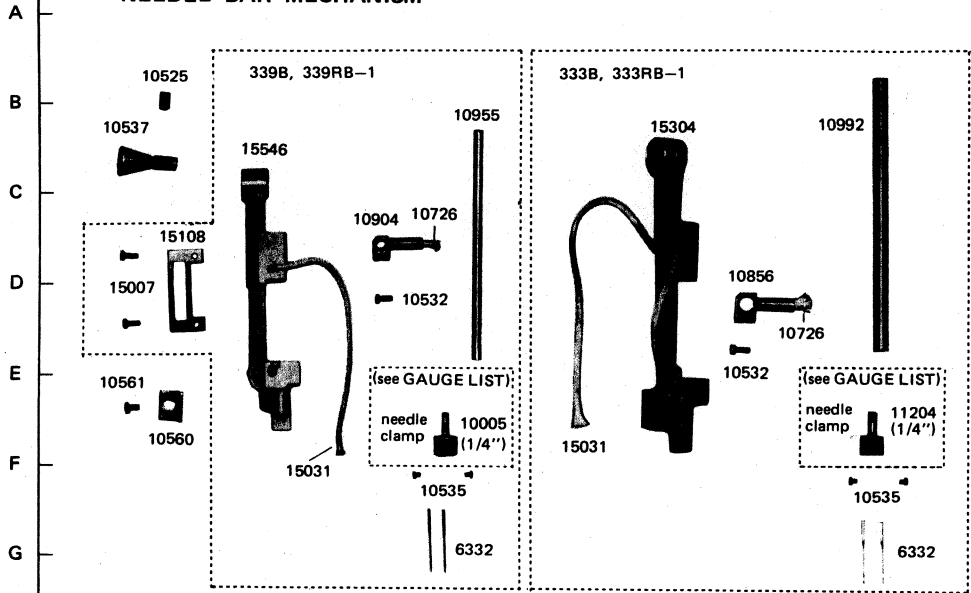
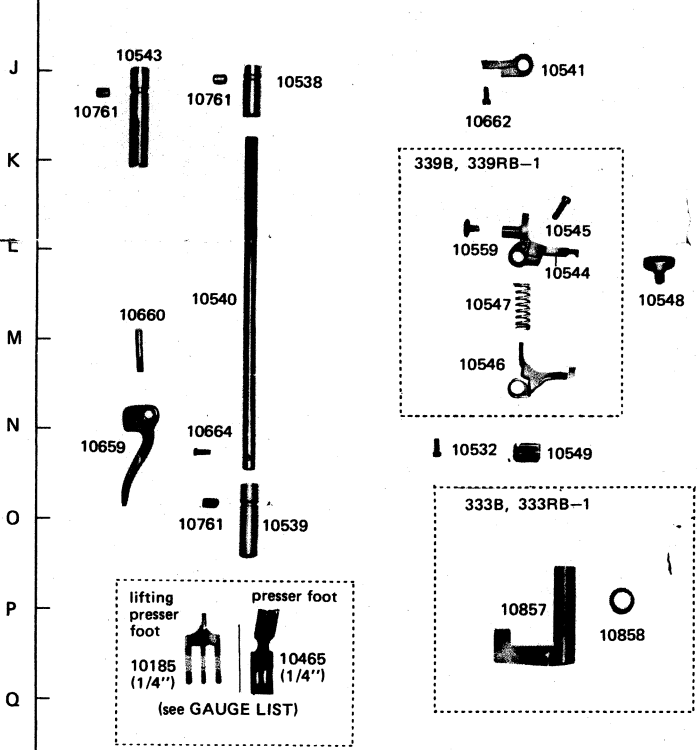


From the library of Diamond Needle Corp

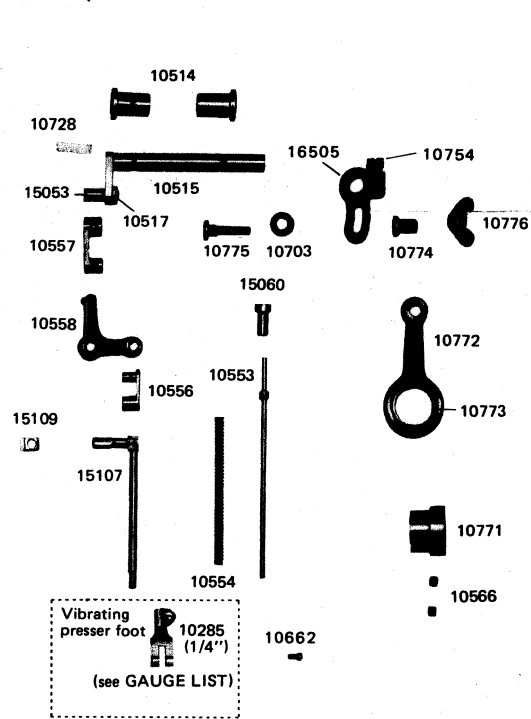
NEEDLE BAR MECHANISM



PRESSER BAR MECHANISM



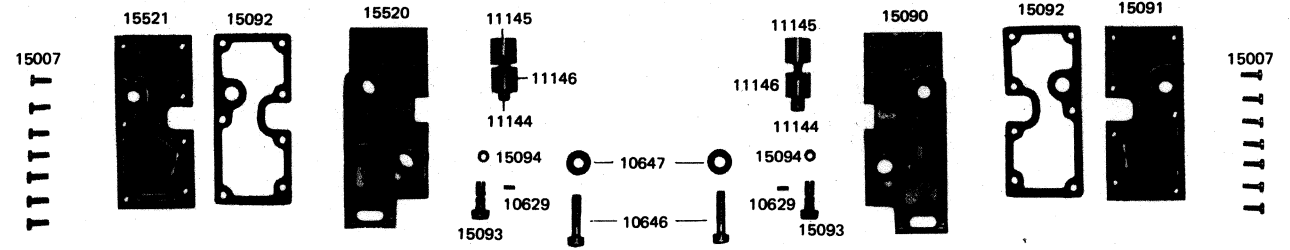
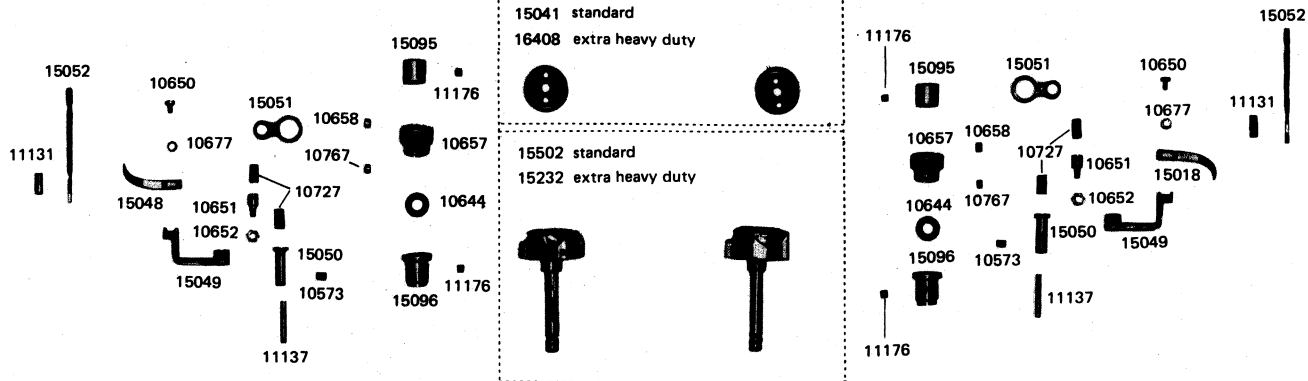
LIFTING ROCK SHAFT MECHANISM FOR 339B, 339RB-1



From the library of: Diamond Needle Corp

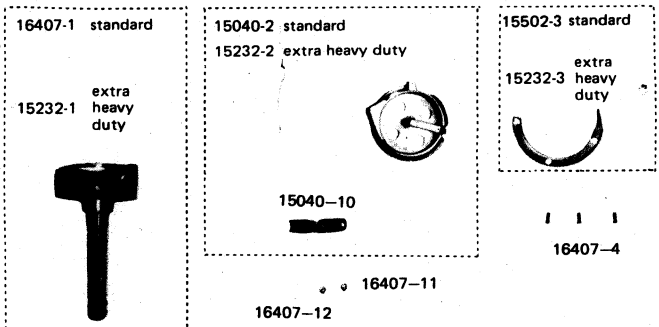


**HOOK SADDLE MECHANISM**

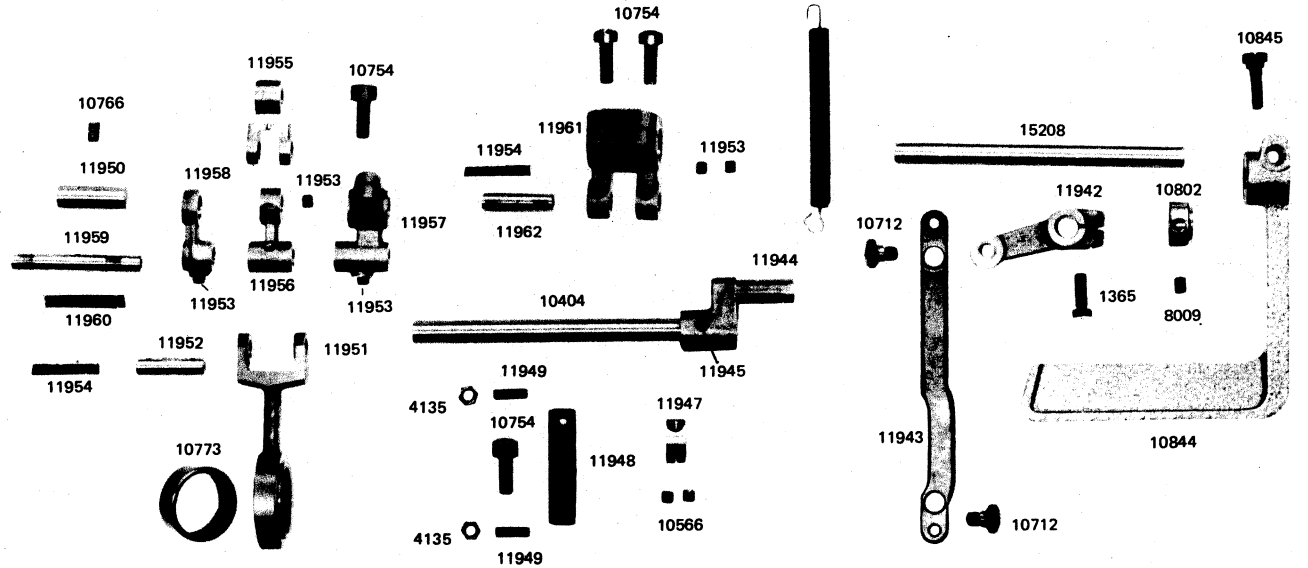


**HOOK**

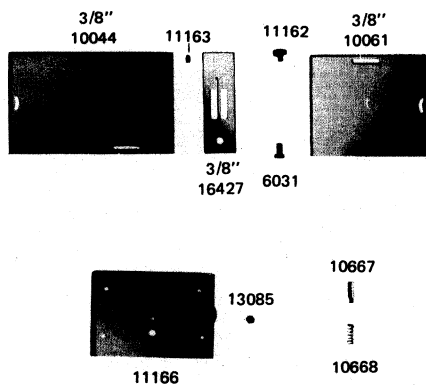
Hook complete number  
 15502 standard  
 15232 extra heavy duty



**REVERSE STITCH MECHANISM**



GAUGE LIST



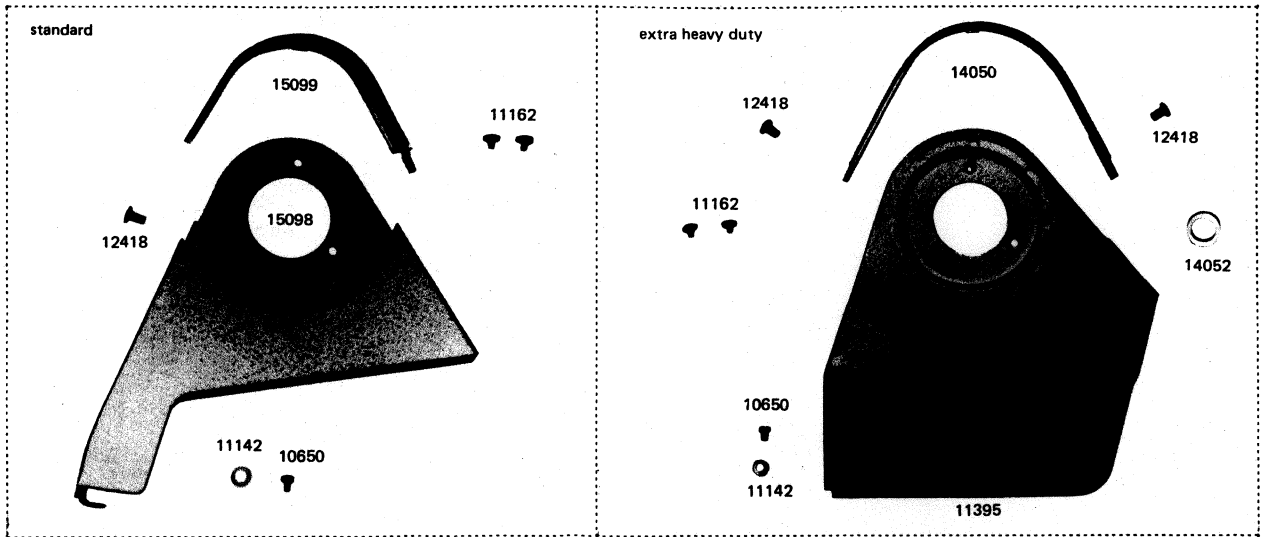
	FOR ALL MODELS		333B, 333RB-1		339B, 339RB-1			FOR ALL MODELS		
	needle plate	feed dog	needle clamp	presser foot	needle clamp	vibrating presser foot	lifting presser foot	bed slide (left)	bed slide (right)	
1/8"	16422 16422TA	10482 10482T	11202 11202	10462 10462T	10002 10002	10282 10282T	10182 10182	10041 10041TA	10060 10060TA	1/8"
3/16"	16423A 16423TA 16423TA	10483 10483T 10483TA	11203 11203 11203	10463 10463T 10463TA	10003 10003 10003	10283 10283T 10283TA	10183 10183 10183TA	10042 10042TA 10042TA	10060 10060TA 10060TA	3/16"
7/32"	16424 16424TA 16424TA	10484 10484T 10484TA	10024 10024 10024	10464 10464T 10464TA	10004 10004 10004	10284 10284T 10284TA	10184 10184 10184TA	10042 10042TA 10042TA	10061 10061TA 10061TA	7/32"
1/4"	16425 16425TA 16425TA	10485 10485T 10485TA	11204 11204 11204	10465 10465T 10465TA	10005 10005 10005	10285 10285T 10285TA	10185 10185 10185TA	10042 10042TA 10042TA	10061 10061TA 10061TA	1/4"
5/16"	16426 16426TA 16426TA	10486 10486T 10486TA	11205 11205 11205	10466 10466T 10466TA	10006 10006 10006	10286 10286T 10286TA	10186 10186 10186TA	10043 10043TA 10043TA	10061 10061TA 10061TA	5/16"
3/8"	16427 16427TA 16427TA	10487 10487T 10487TA	11206 11206 11206	10467 10467T 10467TA	10007 10007 10007	10287 10287T 10287TA	10187 10187 10187TA	10044 10044TA 10044TA	10061 10061TA 10061TA	3/8"
7/16"	16428 16428TA 16428TA	10488 10488T 10488TA	10028 10028 10028	10468 10468T 10468TA	10008 10008 10008	10288 10288T 10288TA	10188 10188 10188TA	10045 10045TA 10045TA	10062 10062TA 10062TA	7/16"
1/2"	16429 16429TA 16429TA	10489 10489T 10489TA	10029 10029 10029	10469 10469T 10469TA	10009 10009 10009	10289 10289T 10289TA	10189 10189 10189TA	10045 10045TA 10045TA	10062 10062TA 10062TA	1/2"
9/16"	16430 16430TA 16430TA	10490 10490T 10490TA	10030 10030 10030	10470 10470T 10470TA	10010 10010 10010	10290 10290T 10290TA	10190 10190 10190TA	10045 10045TA 10045TA	10062 10062TA 10062TA	9/16"
5/8"	16431 16431TA 16431TA	10491 10491T 10491TA	10031 10031 10031	10471 10471T 10471TA	10011 10011 10011	10291 10291T 10291TA	10191 10191 10191TA	10046 10046TA 10046TA	10063 10063TA 10063TA	5/8"
3/4"	16432 16432TA 16432TA	10492 10492T 10492TA	10032 10032 10032	10472 10472T 10472TA	10012 10012 10012	10292 10292T 10292TA	10192 10192 10192TA	10047 10047TA 10047TA	10063 10063TA 10063TA	3/4"
7/8"	16433 16433TA 16433TA	10493 10493T 10493TA	10033 10033 10033	10473 10473T 10473TA	10013 10013 10013	10293 10293T 10293TA	10193 10193 10193TA	10048 10048TA 10048TA	10064 10064TA 10064TA	7/8"
1"	16434 16434TA 16434TA	10494 10494T 10494TA	10034 10034 10034	10474 10474T 10474TA	10014 10014 10014	10294 10294T 10294TA	10194 10194 10194TA	10049 10049TA 10049TA	10064 10064TA 10064TA	1"
1 1/4"	16435 16435TA 16435TA	10495 10495T 10495TA	10035 10035 10035	10475 10475T 10475TA	10015 10015 10015	10295 10295T 10295TA	10195 10195 10195TA	10050 10050TA 10050TA	10065 10065TA 10065TA	1 1/4"
1 1/2"	16436 16436TA 16436TA	10496 10496T 10496TA	10036 10036 10036	10476 10476T 10476TA	10016 10016 10016	10296 10296T 10296TA	10196 10196 10196TA	10051 10051TA 10051TA	10065 10065TA 10065TA	1 1/2"

Top	Standard type
Middle	Extra heavy duty
Bottom	

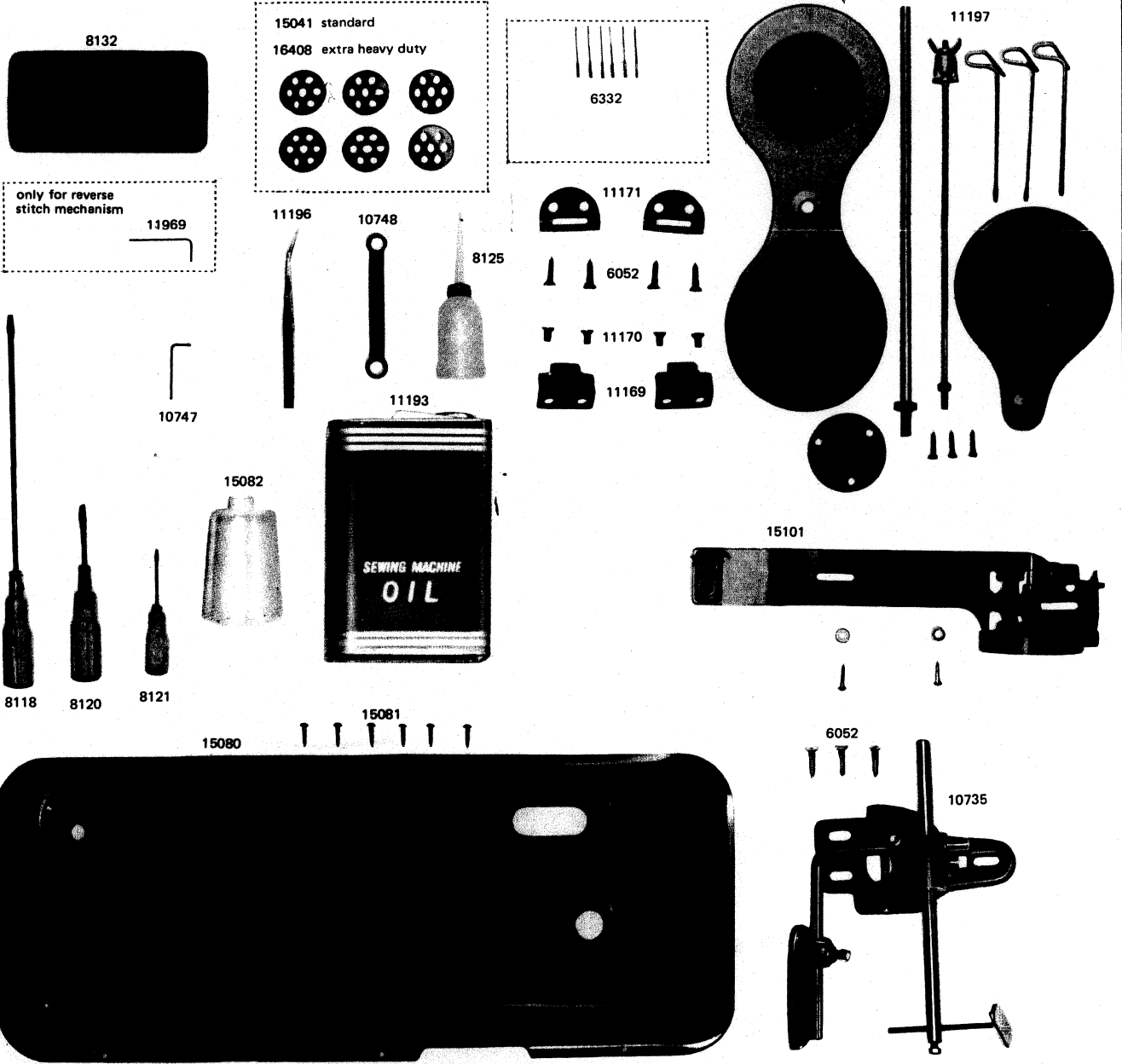
\* Needle distance: Standard type = 1/8" - 1 1/2"  
Extra heavy duty = 3/16" - 1 1/2"



BELT GUARD (Optional Equipment)



ACCESSORIES



From the library of: Diamond Needle Corp